

Flat 3, 395 Wilmslow Road, Withington, Manchester, M20 4WA

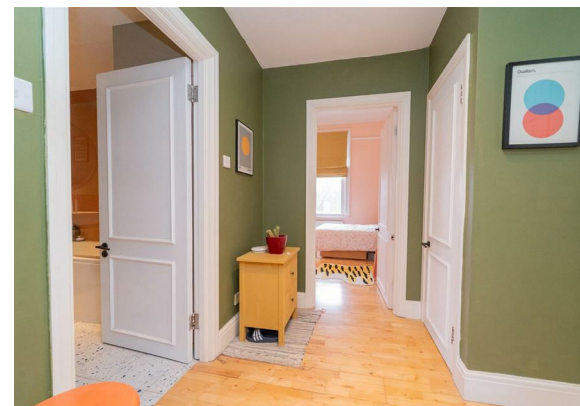


JP&Brimelow
ESTATE AGENTS

Offers In The Region Of £175,000

 1  1  1  C


VIDEO TOUR AVAILABLE A delightful and spacious, ONE DOUBLE BEDROOM, first floor apartment, situated within this period conversion on Wilmslow Road, off Mauldeth Road. This property is within easy reach of local amenities, including shops, cafes, and schools. The area is well-served by public transport, providing a quick and easy commute in to Manchester City Centre and is close by to The Christies hospital and Withington Hospital. In brief the well-planned apartment consists of a communal entrance hall with stairs leading to all floors, a private entrance half with useful storage cupboard, a generous sized lounge area with high ceilings, stairs lead down into the good-sized kitchen/diner, a white three-piece bathroom suite, and a large double bedroom with built in wardrobe completing this fantastic apartment. The apartment benefits from gas fired central heating, high ceilings, an intercom system, and allocated off-road parking.





EPC Chart

Energy Efficiency Rating

	Current	Potential
Very energy efficient - lower running costs		
(92 plus) A		
(81-91) B		
(69-80) C	77	81
(55-68) D		
(39-54) E		
(21-38) F		
(1-20) G		
Not energy efficient - higher running costs		
England & Wales	EU Directive 2002/91/EC 	



Tenure: **Leasehold** Council Tax Band: **B**

First Floor



JP & Brimelow Estate Agents Ltd
 430 Barlow Moor Road, Manchester, M21 8AD
 Tel: 0161 8822233
 E: sales@jpbrimelow.co.uk www.jpandbrimelow.co.uk



JP & Brimelow
 ESTATE AGENTS

NOTICE: JP & Brimelow Estate Agents Ltd for themselves and for the vendors or lessors of this property whose agents they are give notice that:

- (i) the particulars are set out as a general outline only for the guidance of intending purchasers or lessees, and do not constitute, nor constitute part of, an offer or contract;
- (ii) all descriptions, dimensions, references to the condition and necessary permissions for use and occupation, and other details are given in good faith and are believed to be correct but any intending purchasers or tenants should not rely on them as statements or representations of fact but must satisfy themselves by inspection or otherwise as to the correctness of each of them;
- (iii) no person in the employment of JP & Brimelow Estate Agents Ltd has any authority to make or give any representation or warranty whatever in relation to this property.

jpandbrimelowestateagents

@jpandbrimelow